

## **Abortion, Contraception Reversal- Medical Miracle- Autologous Germ cells replant- Decline in global degenerative, autoimmune, neoplastic, infectious diseases; decline in rising environmental estrogen [equating with aborted blood pollution] and decline in depletion of ozone.**

Dr. Elizabeth JeyaVardhini Samuel<sup>1</sup> M.B.B.S. M.D.  
Dr. Gouthaman Thiruvenkadam<sup>2</sup> Dr. Kevin T John Keeppallil<sup>3</sup>  
Assistant Professor<sup>1</sup>, Postgraduate Resident<sup>2,3</sup> Department of General Medicine  
**Pondicherry Institute of Medical Sciences,**  
No.20, Kanaga Chettikulam, Kalapet, Pondicherry – 14. INDIA

**Abstract:** Back ground: Era of contraception, abortions, [20<sup>th</sup>, 21<sup>st</sup> centuries] witnessed, global epidemic of degenerative diseases, auto immune diseases, neoplasms and rise in infectious diseases. Rise in environmental estrogen was documented.

**Objectives:** Altruistic association of contraception [if any], with increasing degenerative, auto immune, infectious diseases and neoplasms was sought after; effects of contraception reversal on recovery of diseases was sought after as cause and effect phenomenon; Aborted blood, contraceptive menstrual blood pollution evidenced by rise in environmental estrogen favoring microbial growth, virulence, infectious diseases needed to be confirmed

**Methods:** In 2012, retrospective analysis of data of various diseases in 350 patients of 20-35 years, 36-50 years, >50 years age groups, collected by convenient, stratified random sampling, from different geographical locations, from 2003-2012 and association with presence, absence of contraception, abortion was undertaken; simultaneously, serum estrogen levels obtained from 105 patients, was also analyzed;

The effect of contraception reversal including tubal recanalisation among 37 patients could be analyzed in relation to recovery of diseases though only 3 patients' estrogen levels could be estimated after reversal.

4sea water samples, 3 river water samples were analyzed for estrogen levels.

Hemoglobin electrophoresis was attempted in sea water to identify fetal, adult hemoglobin.

Alpha feto protein,  $\beta$  Human chorionic gonadotropins were estimated in sea, river water samples.

**Results:** Bio informatics analysis revealed 275% increased diseases in contraceptive users aged 20-35yrs, 35-50yrs, [p<0.0005] associated with low estrogen levels in 61% of contraceptive users [p<0.0005]; 500% increase in prevalence of diseases was detected after hysterectomy [p<0.0005] with endogenous estrogen as low as 0.4pg; Oil without cholesterol consumption had 50% increased osteoporosis, degenerative diseases [p<0.0005].

River water showed 3-5pg of estrogen, sea water showed 0.3-1pg of estrogen suggesting estrogen brought by the rivers gets diluted in the sea

Routine hemoglobin electrophoresis measuring in grams could not detect any visible bands.

Alpha feto protein was measured in sea, river water as <0.6ng;  $\beta$  human chorionic gonadotropins was detected in the sea, river water as <0.1miu/ml

**Conclusion:** Retrospective analysis revealed 275%-500% increase in diseases in both partners with contraception, hysterectomy respectively, associated with decreased endogenous estrogen secondary to germ cell destruction; with contraception reversal 79.9% estrogen returns with halt of germ cells' fragmentation, thereby decreasing diseases; Oil cholesterol being converted to our endogenous estrogen, androgen is essential fatty acid.

Alpha feto protein, estrogen,  $\beta$  Human chorionic gonado tropin detected in the sea, river water suggested aborted blood, contraceptive menstrual blood pollution favoring infectious diseases.

**Keywords:** Contraception reversal, regression of metabolic syndrome, Fragmented germ cells, autologous germ cell replantation, Restoration of endogenous estrogen, rising environmental estrogen.

### **I. Introduction**

People were attributing low back aches, weight gain to after sterilization though the procedures as such were uneventful.

~2000- 50-75% increased incidence of type 2 diabetes mellitus, osteoporosis, myocardial infarction, cerebrovascular diseases, systemic hypertension, chronic obstructive pulmonary disease, asthma, liver disease, exponential increase in lung cancer were observed in the globe and an attempt to analyze the etiology by multivariable's including contraception was undertaken.

Since 1997 United Nations intelligence, cautioned about receding population growth rate i.e. negative birth rate in 5 countries namely Bahamas Italy, Thailand, Mongolia, Singapore; whereas 66 countries had negative birth rate in 2005-as per PAPRI; United Nations had warned India- which had replacement rate and China not to reduce the population; if they reduce, there will be economy crisis, there'll be no personnel for army as e.g. Italy. Contraception has been implemented for 40-80 years in the globe and embraced universally to reduce population (annihilate human race-guillotine protocol). Contraception has been introduced on healthy people (who had never approached doctors with disease) i.e. no therapeutic indication warranted contraception (as per the principles of practice of medicine); no evidence based approach to assure safety (study) was considered prior to or followed up by medical faculty and our curriculum has the presumptive teaching that contraception has no side effects. Hence this retrospective analysis to elucidate any altruistic relationship with contraception, abortion as cause and effect phenomenon with increasing diseases was undertaken

## **II. Methods**

Minimum of 30 samples was planned for, in each of 3 age groups, namely 20-35 years, 36-50 years, >50 years; though people from the community are visiting the hospital, analysis of hospital patients alone can create a bias, hence data from the community, hospital, health screening camps, of different geographical locations were included; data from each person depicted, prevalent diseases, status of contraception, hysterectomy, type of oil ingested, life style, level of nutrition, presence of anemia; the data was tabulated as prevalent diseases, matched against the variables in each age group; retrospective bioinformatics analysis was done, by plotting histograms for the 3 age groups and cumulative graphs for each disease in 2012; an example of tabulation of the data is provided in the supplementary file.

In 2003 house to house survey in the community, spread over 3 weeks, was conducted by the corresponding author, to collect data of prevalent diseases of 100 people; the people who were present during the survey were included at random, by convenient sampling into the 3 age groups namely 20-35 years, 35-50 years, >50 years, to include a minimum of 30 people in each age group; serum estrogen, progesterone, anti sperm antibody estimation was done for 12 people as per their request; the reduced estrogen levels [5-8pg] found in young contraceptive users, was the eye opener, leading to further data analysis [all had normal progesterone values correlating with cyclical withdrawal bleeding; anti sperm antibody was absent in all of them].

In 2004 data of 93 hospital patients was collected over a period of 6 months, including diseases prevalent, contraception status, life style, nutrition, type of oil ingested, level of hemoglobin and were assigned to the 3 age groups by stratified random sampling with a minimum of 30 patients in each age group; serum estrogen estimation was done for all 93 patients; the data was tabulated matching diseases against status of contraception and other variables; one patient was a foreign national.

In 2011, 96 people [43 couples] working in different states of our nation had attended a health screening camp conducted in the community, spread over 3 days and their data was analyzed after assigning into the 3 age groups at random, for association of diseases with status of contraception, hysterectomy and other variables; effect of contraception in both partners after contraception also could be analyzed; none had sedentary life style, low nutrition or anemia or had worn tight attires around the pelvis.

In 2012, data of 61 hospital patients including a foreign resident, from another geographical location, was collected over a span of 6 months, assigned to the 3 age groups at random and was pooled to the other data from 2003, 2004, 2011 and retrospective bioinformatics analysis was undertaken for the 350 patients in Karunya University by an Engineering college student, by plotting histogram for the 3 age groups and cumulative graphs for each disease.

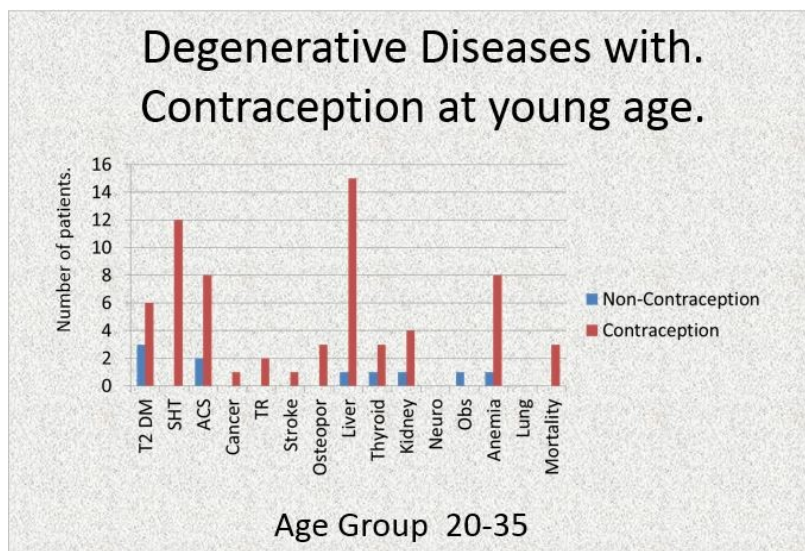
Data of 37 patients with contraception reversal including tubal recanalisation, removal of copper t, discontinuing condoms was analyzed for the recovery of diseases and three of these patients' serum estrogen levels could be estimated.

Data was also analyzed to see the effect of post-hysterectomy status with diseases' prevalence 4 sea water samples from Indian Ocean, Arabian Sea, Bay of Bengal, 3 samples from river water of Cape Comorin were analyzed for estrogen levels.

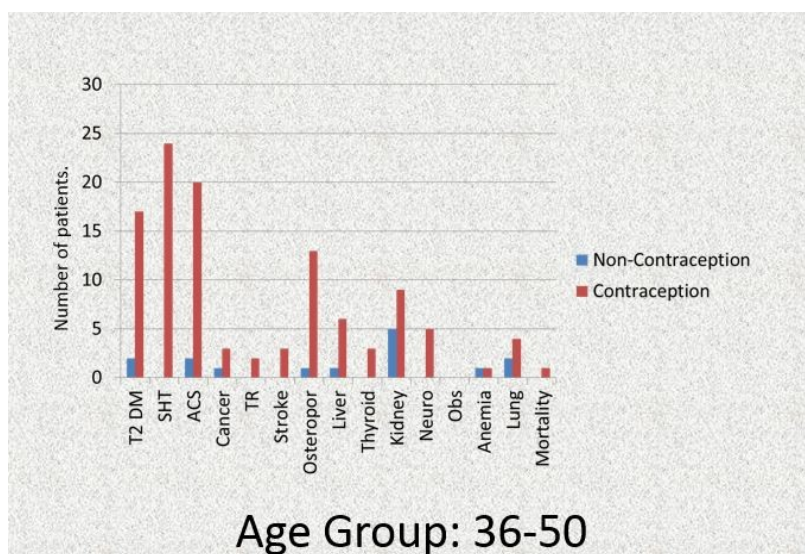
Hemoglobin electrophoresis was attempted in sea water of Bay of Bengal to identify fetal, adult hemoglobin. Alpha fetoprotein,  $\beta$  Human chorionic gonadotropins were estimated in sea water of Bay of Bengal, river water samples.

### III. Results

We noticed increase in 14 prevalent diseases among contraceptive users aged 20-35 years namely Diabetes Mellitus-3fold increase[  $p<0.0025$ ]; systemic Hypertension, Cancer, Tumor, Osteoporosis, mortality were seen only in contraceptive users with absolute significance; acute coronary syndrome showed 4 fold increase[  $p<0.0005$ ], nonalcoholic hepatitis, Fatty Liver, Liver disease showed 14 fold increase[  $p<0.0005$ ], hypothyroidism showed 3 fold increase[  $p<0.0025$ ], Kidney disease showed increase by 4 fold [  $p<0.0005$ ]. **figure1**

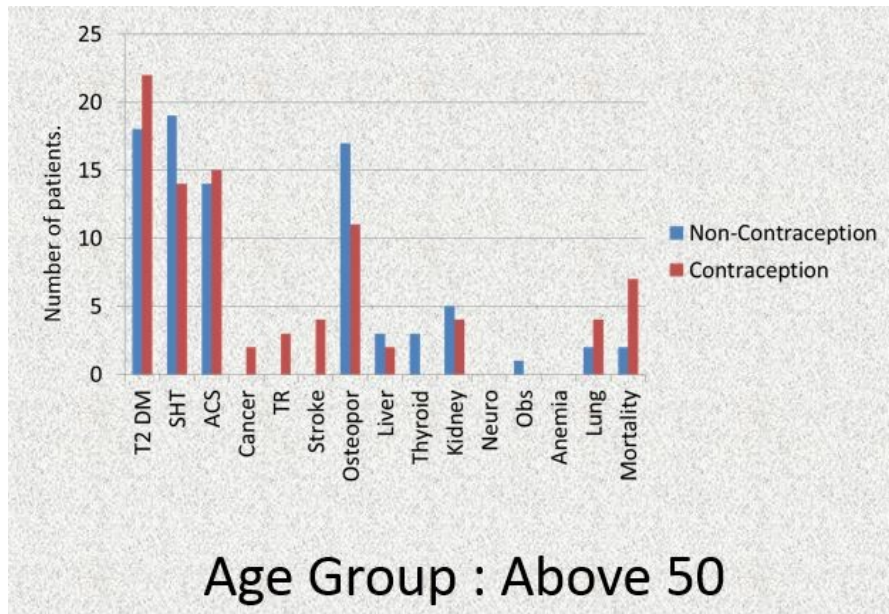


Among contraceptive users aged 36-50 years T2 Diabetes Mellitus showed 17 fold increase[ $p<0.0005$ ], systemic hypertension showed 24 fold increase[  $p<0.0005$ ]; acute coronary syndrome showed 20 fold increase[  $p<0.0005$ ]; tumor, stroke, thyroid diseases, neurological pathology, mortality were absent in non contraception users with absolute significance; osteoporosis showed 15 fold increase[  $p<0.0005$ ], liver diseases showed 7 fold increase[  $p<0.0005$ ]; kidney diseases showed 8 fold increase[  $p<0.0005$ ], lung pathologies showed 4 fold increase[ $p<0.0005$ ]**figure 2**



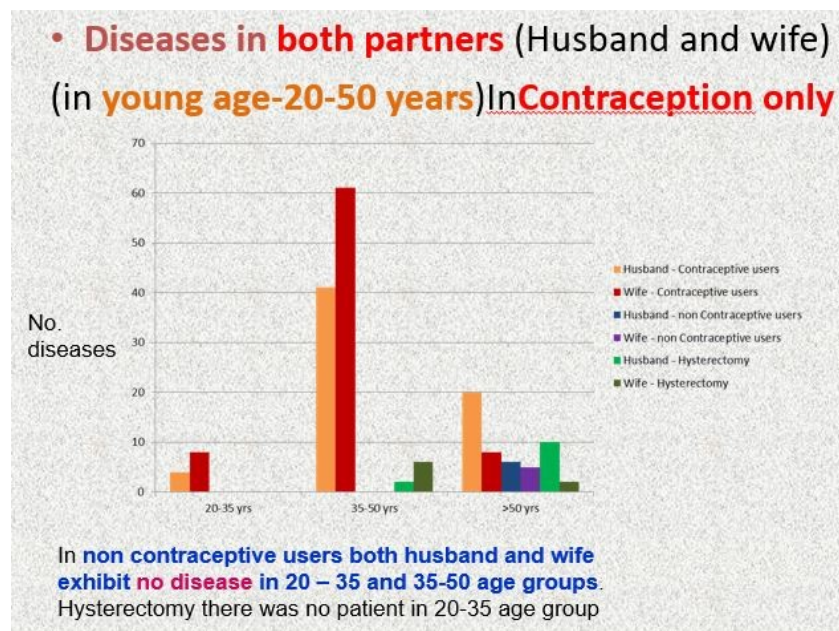
Among contraceptive users aged >50 years there was no significant difference in prevalence of t2 diabetes mellitus, acute coronary syndrome, systemic hypertension, osteoporosis, kidney liver diseases as compared with non contraceptive users of whom many were >70 years but mortality showed 7 fold increase in contraceptive users [  $p<0.0005$ ]**figure 3**



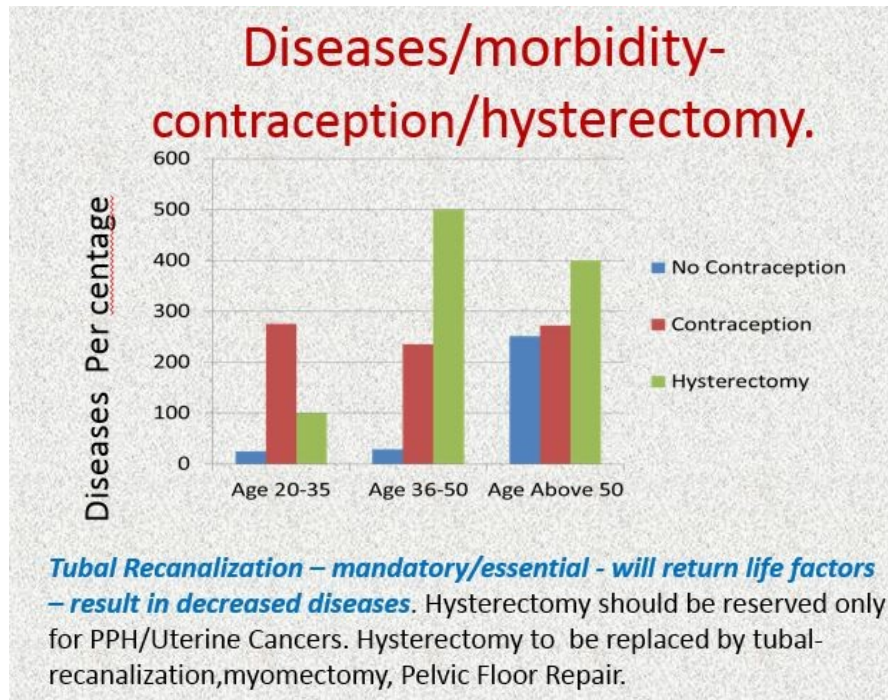


Above 50 yrs non contraceptive users also had degenerative diseases because endogenous estrogen drops to 15pg above 37 yrs, 5pg ~75years, from ~300pg of 17 years of age; but contraceptive users expressed 3 fold increase in diseases as compared with the non contraceptive users; Age group >50years had ~50-60 yrs age people in contraceptive users, more number of 70-80 years of age were in non contraceptive users; >70 yrs non contraceptive users were compared with >50 yrs contraceptive users since we did not have > 70 yrs age group separately.

Master health checkup analysis revealed both partners are affected in contraceptive users only among 20-50 years [p<0.0005]; similarly both partners without contraception were without diseases **figure 4**

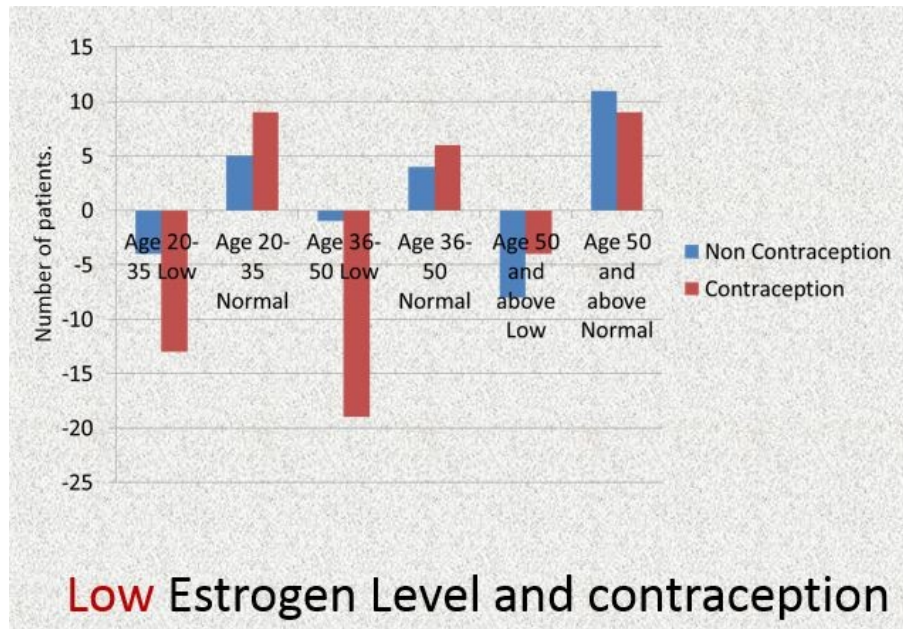


275% increased incidence of degenerative diseases [p<0.0005] was seen in people who used contraception in 20- 35 yrs and 35- 50 yrs **figure 5**.

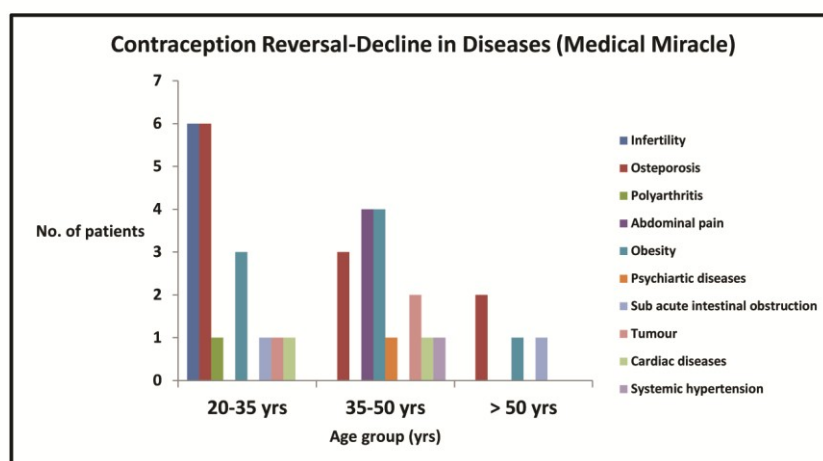


Postoperative hysterectomy (orchidectomy) status analysis revealed 500% increased incidence of diseases but with no possibilities of contraception reversal (path of no return) because the estrogen levels were as low as 0.4pgm

Endogenous estrogen was reduced to 5-8pg in 61% of people using contraception, among 20-50 years [p<0.0005] figure 6.



Contraception reversal (e.g. fallopian tubal recanalisation, removal of copper-t, recommendation to stop using condoms) restored estrogen levels to 79.9% of normal values for that corresponding age and restored health with decreased diseases, regressed metabolic syndrome namely osteoporosis, systemic hypertension, infertility, abdominal pain of probable adhesion colic, sub acute intestinal obstruction, obesity slimmed with pleasurable difficulty to identify them within 15 days, tumors shrunk, did not recur, polyarthritis with deformity reverted with added supplementation of essential fatty acids, auto immune diseases like neuro myelitis optica with dystonia, quadriplegia disappeared restoring normal power with added low dose intravenous immune globulin, control of uro sepsis and supplementation of essential fatty acids. figure 7.



There was no geographical variation since the human physiology is the same and the untoward pathology.

People who had used oil without cholesterol, sunflower refined oil, had 50% increased osteoporosis and other degenerative diseases as part of metabolic syndrome, since Low density lipo protein, High Density Lipoprotein of oil gets converted to oestrogen, androgen required for vitamin D metabolism to attach calcium to bones and for every cell cycle, metabolism.

River water showed 3-5pg of estrogen, sea water showed 0.3-1pg of estrogen suggesting estrogen brought by the rivers gets diluted in the sea

Routine hemoglobin electrophoresis measuring in grams could not detect any visible bands in sea water sample; if some equipment can detect hemoglobin in pictogram or nanograms probably the visible bands could be identified. .

Alpha feto protein in sea, river water measured as <0.6ng;  $\beta$  human chorionic gonadotropins in the sea, river water measured as <0.1miu/ml suggesting aborted blood, contraceptive blood pollution of the environment resulting in infectious diseases, global hypoxia, warming, recession.

#### IV. Discussion:

Global epidemic of diseases was witnessed in 20<sup>th</sup> century as contraception, abortion without therapeutic indication got implemented without prior, post studies about safety, need. In United States of America diabetes mellitus is the leading cause of end stage renal disease, non traumatic lower extremity amputations and adult blindness; also predisposes to cardio vascular diseases; [1] 30 million cases of type 2 diabetes mellitus was reported in 1985, has increased to 285 million diabetes by 2010, International Federation of Diabetes Mellitus projects 438 million by 2030.

Systemic hypertension is one of the leading causes [2] of global burden of disease; 7.6 million deaths [13-15% of the total] and 92 million disability adjusted life years, world wide, were attributable to high blood pressure in 2001; 95% of patients with hypertension, an underlying cause cannot be found, hence its called as essential hypertension; inelasticity [3] is multifactorial; practical definition of hypertension is the blood pressure, at which benefits of treatment, outweigh the risks of costs and hazards; there's little evidence, stress causes hypertension.

Cancer is a global concern<sup>1</sup> with worldwide 10 million new cases per year; 46% in developed countries, mortality as high as >7 million deaths per year global costs, social impact are considerable. [4]

Acute coronary syndrome encompasses acute myocardial infarction with ST elevation, unstable angina, non ST elevation myocardial infarction; incidence of unstable angina, non ST elevation myocardial infarction is increasing ~3 million/year. [5]

Concept is Tubectomy, condoms, copper t-any form of contraception prevents the normal path traversed by the germ cells resulting in reduced endogenous oestrogen, androgen mediated by endorphins to hypothalamus-pituitary axis secondary to smashed destruction of germ cells-slender chromatids to chromatid breaks, acentric fragments, ring chromosomes [6] leading to increased occurrence of degenerative diseases metabolic syndromes (by acquired chromosomal defects, mutations) in young parents e.g.type2 diabetes-mellitus: systemic hypertension, coronary-artery disease, neurodegenerative, renal, liver diseases.

Contraception increases autoimmunity by immunity identifying fragmented chromatids of sperms (20 million/day), and nuclear materials of degenerating ovum within the peritoneal cavity as foreign. Autoimmune antibodies developed against fragmented nuclear materials, target nuclear materials, with its nuclear component of sperm or ovum inherited from parents resulting in the wide spectrum of collagen vascular diseases,

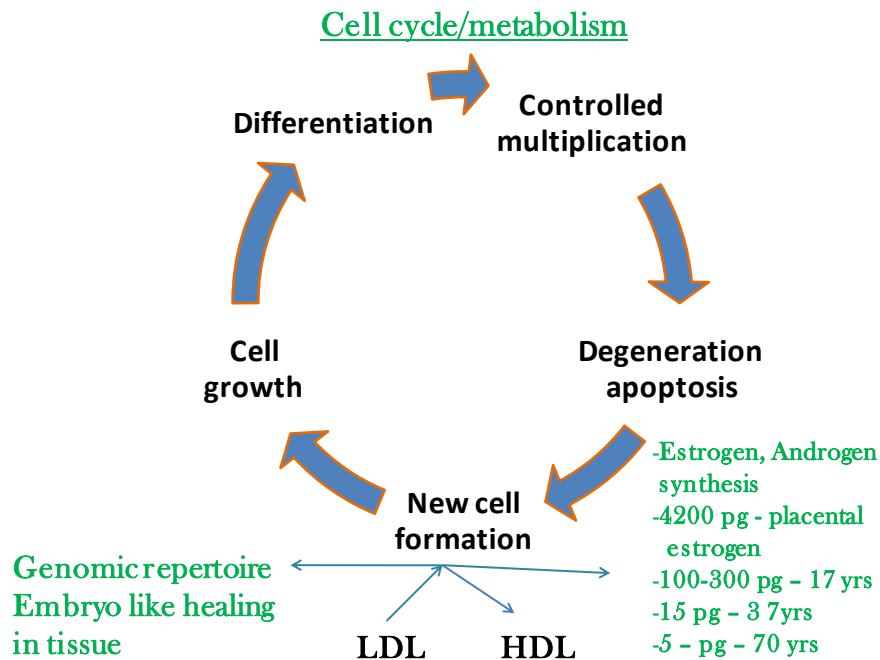


autoimmune diseases e.g. multiple sclerosis, Systemic lupus erythematosus, acute Gillian Barre syndrome-demyelination radiculopathies.

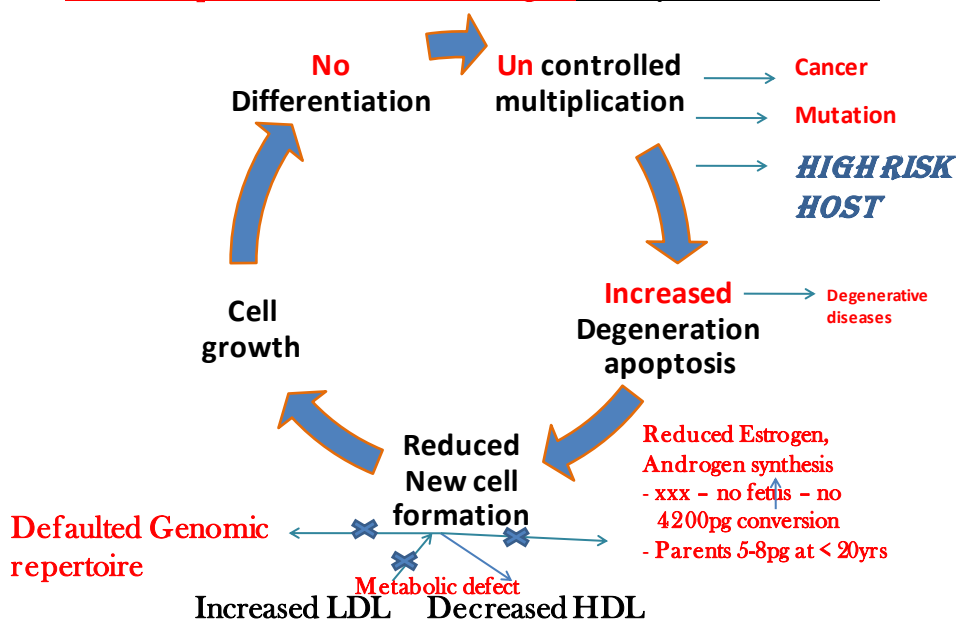
Decreased hormonal surveillance results in uncontrolled multiplication preceded by no differentiation of cells leading to neoplasms.

Copper-T removal, reversal of tubectomy, vasectomy, recommendation to inhibit condom, contraception use, achieves survival of germ cells by restoration of normal path traversed by germ cells with consequent rejuvenation of hormones- oestrogen, androgen- 79.9% of normal level for that age- as in restoration of fertility with contraception reversal -55%-79.9% in young age i.e. <37 yrs)[7],

### Endogenous estrogen, androgen surveillance

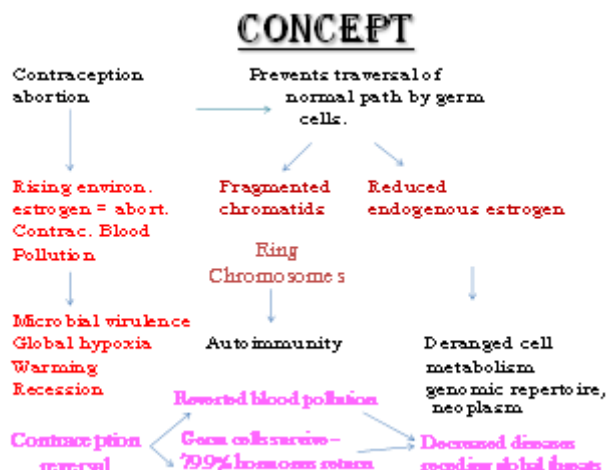


### Reduced Endogenous estrogen, androgen Contraception, Abortion - Deranged Cell cycle/metabolism



Germ cells survival or replantation, rejuvenation of hormones, on reversal of contraception-regresses every degeneration at every cell resulting in e.g. growth of new nails, hair follicles, new blood vessels, collaterals to do natural by pass as in embryo, normal adult (i.e. without contraception) regrowth of islets, stops

further auto-immune destruction of islets-decreases severity, postpones diabetes mellitus, regresses systemic hypertension, liver disease, kidney disease, airway disease,- regresses metabolic syndrome. Tumors do not recur but shrink in size.



Contraception reversal halts fragmentation, destruction of GERM CELLS resulting in decreased autoimmunity progression.

Contraception reversal results in improvement of degenerative brain, neuronal diseases e.g. -seizures, depression, divorces, suicidal tendencies, psychiatric diseases, sexual promiscuity, homosexual behavior, criminal behavior, ethanol, drug addiction, smoking, dementia regress without further progression; hypothyroidism (estrogen dependent is thyroid) improves; obesity –slims,(decreased status of estrogen, growth hormone, thyroid results in deregulation of factors governing cell morphology leading to morbid obesity, without secondary sexual character dimorphism) recurrence, occurrence of fibroids, fibro adenomas recede (decreased estrogen, growth hormone surveillance results in tumors, cancers after contraception, instead of normal growth of cells to form tissue, organ). [8]

Osteoporosis, improves; (estrogen returns, decreases theft of calcium from bones); autoimmunity regresses because iatrogenic contraception to destroy the germ cells to smashed fragments, has been removed; cancers -virulence, spread, incidence decreases (return of estrogen’s surveillance)

Contraception reversal enables every cell’s differentiation and controlled multiplication to become tissue, organ and not fibrosis, tumor, neoplasm). [9]

Old post operative status tubectomy, vasectomy, contraception, hysterectomy, and low essential fatty acids intake (oil without fat) due to low hormones, have high tendency for adhesions intestinal obstruction, volvulus, retroperitoneal fibrosis.

Simple therapies achieve great success as the contraception reversal revives each cell’s function, genomic repertoire [8] (by the return of hormones) which our therapy capitalizes. (E.g. embryo like healing is in the tissues which bear genomic identity of zygote, we can only suture)

Oil cholesterol is converted to endogenous estrogen, androgen. Cholesterol--- steroid reproductive hormones- name itself is derived from chole sterol [10]

Virgin Oil with essential fatty acids, non refined –has life, growth factors (phytoestrogen, vitamin E, cholesterol, growth hormone, growth trophic factors,) transferred from nuts, seeds containing seedling(coconut oil, olive oil, groundnut oil, gingili oil, palmolein oil) Olive oil has the highest fertility index; sunflower seed has 6 times less vitamin `E` than ground nut oil which also gets removed by refining.

Attire of Jeans, Tights, Bells, Barrel, Boot models –having undescended testes effect-due to increasing heat around pelvis-resulting in thermogenic destruction of germ cells , reduced hormones; germ cell malignancy can result, degenerative diseases too; most of the patients included in this study were not using such dresses.

The other variables considered as probable causes for increase in morbidity incidence were life style, presence of anemia, type of oil consumed, malnutrition, type of attires; these variables were nullified since none had anemia; many patients were on the obese side than malnourished, all had moderately busy life style. People who had consumed refined oils, sunflower oil-, cholesterol deprived diet had 50% increased osteoporosis, degenerative diseases.

In 1998 Professor Paul Devroey [11] discovered estrogen like particles are on the rise in the air when he attempted to find the air pollutant to explain increase in infertility.

In 1994 Dr Susan Jobling [12] of Brunel University documented estrogen like compounds in river water as pollutant when she had attempted to elucidate the pollutant responsible for disappearance of fish  
863,000,000 abortions×4200pgm of estrogen×~350ml blood loss/abortion=environmental estrogen



When a mother is blessed for e.g. with 10 children she will not menstruate for 200 months or 20 years; whereas after contraception:-

1,989,375,754 women of 15-50 years $\times$ 200 months $\times$ 300pgm of estrogen $\times$ 350ml menstrual blood loss =environmental estrogen

Global Environmental estrogen increase=global innocent aborted blood, contraceptive menstrual blood stained air-inhalation, water ingestion=environmental aborted blood, contracepted menstrual blood pollution.

Our analysis of sea, river waters detected estrogen, alpha feto protein,  $\beta$  Human chorionic gonadotropins confirming further aborted, contraceptive menstrual blood pollution of the environment

The concept is universally practiced contraception, guillotine protocol based, without therapeutic indication, for e.g. 863 million reported surgical abortions till 2010, has resulted in innocent aborted blood, contraceptive menstrual blood pollution of the environment, as evidenced by rise in estrogen like particles in air and water, environmental estrogen;<sup>3</sup> contraceptive menstrual blood, aborted blood being a very good media for incidence, prevalence of viruses namely Human immunodeficiency virus, Hepatitis A,B,C,D,E viruses, SARS, Chikungunya, Dengue, H1N1, Extended spectrum of Beta lactamase production, drug resistance of microbes including tuberculosis, (inherently less virulent), polyvalent strains of varicella, making vaccines ineffective, rising infectious diseases.

Aborted blood pollution depletes oxygen of the air, water, which cannot be replaced by plants; [unlike live humans with their emissions being food, manure for plants replenish oxygen molecule by molecule- God ordained self sustaining ecology,] resulting in progressive cumulative global hypoxia, depletion of oxygen envelope-ozone, global warming, tornadoes, inevitable cyclones, floods, tsunamis, earthquakes, disappearance of islands, fish, birds, grapes.

God ordained live humans to self sustain economy are terminated, prevented from coming into existence for decades, hence the hard hit recession [we invest on people to see returns]; reduced customers, consumers, passengers, students... than providers.

Contraception reversal, prohibition of abortion is mandatory to reverse global threats.

#### **V. Final conclusion:**

275% increased incidence, prevalence of diseases including mortality at young age is seen with contraception.

Analysis detected diseases among contraceptive users aged 20-35 years namely Diabetes Mellitus-3fold increase[  $p<0.0025$ ]; systemic Hypertension, Cancer, Tumor, Osteoporosis, mortality were seen only in contraceptive users with absolute significance; acute coronary syndrome showed 4 fold increase[  $p<0.0005$ ], nonalcoholic hepatitis, Fatty Liver, Liver disease showed 14 fold increase[  $p<0.0005$ ], hypothyroidism showed 3 fold increase[  $p<0.0025$ ], Kidney disease showed increase by 4 fold [  $p<0.0005$ ].

Among contraceptive users aged 36-50 years T2 Diabetes Mellitus showed 17 fold increase[ $p<0.0005$ ], systemic hypertension showed 24 fold increase[  $p<0.0005$ ]; acute coronary syndrome showed 20 fold increase[  $p<0.0005$ ]; tumor, stroke, thyroid diseases, neurological pathology, mortality were absent in non contraception users with absolute significance; osteoporosis showed 15 fold increase[  $p <0.0005$ ], liver diseases showed 7 fold increase[  $p<0.0005$ ]; kidney diseases showed 8 fold increase[  $p<0.0005$ ], lung pathologies showed 4 fold increase[ $p<0.0005$ ]

Reversal of contraception, returns health to all cells of both partners; degenerative diseases, (metabolic syndromes) auto immune diseases, neoplastic diseases and infectious diseases regress as the life giving hormone returns to 79.9% corresponding to that age's normal range within 48-72 hours, secondary to halt of germ cells destruction.

Destruction of germ cells halts and revival of germ cells occur; body's own germ cells (autologous)are retrieved from destruction-artificial detrimental contraception has been reversed; life giving –reproductive hormonal surveillance returns; bathes each cell, nurtures every cell, helps in differentiation, controlled multiplication, cell 's degeneration, regeneration(wear and tear, repair)is compensated; so degeneration doesn't relentlessly progress, cell's repair is effective; immunity is restored, altered immunity, autoimmunity doesn't relentlessly progress.

Post hysterectomy (orchidectomy) status is associated with  $>500\%$  incidence of degenerative diseases because the associated estrogen levels were as low as 0.4pgm; this status is the path of no return i.e. hormones cannot be restored. Hence myomectomy with fallopian tubal recanalisation (myoma occurred secondary to contraception and decreased hormonal surveillance), pelvic floor repair or sling procedure(broad ligament round ligament placation (as in nulliparous prolapse) with fallopian tubal recanalisation to be planned (prolapse, hernias are more in incidence due to degeneration of pelvic floor/abdominal muscles after contraception and decreased hormones) instead of hysterectomy; hysterectomy to be preserved only for cancer uteri and post partum hemorrhage; orchidectomy for testicular cancers only, not for prostate problem because it's the decreased androgen that leads to in equal growth of prostate in hyperplasia, neoplasms.

Both partners are affected after contraception, similarly contraception reversal restores health in both partners as cause and effect relationship; enables effective health care delivery.

Contraceptive menstrual blood, aborted blood pollution as evidenced by rising environmental estrogen, confirmed in our analysis by the presence of estrogen, alpha fetoprotein,  $\beta$  human chorionic gonadotropin in sea, river water samples favors infectious diseases, depletion of environmental oxygen leading to global hypoxia, warming, cyclones, floods, tsunamis, earthquakes, disappearance of islands, fish, birds, grapes and global recession without live humans-prevented and terminated without reason.

#### **Article Focus:**

- Increased incidence of diseases, mortality, with therapeutic inefficacy in spite of advanced technological life saving measures, in 21<sup>st</sup> century, as compared to 20<sup>th</sup> century prompted this analysis.
- Contraception implemented with presumed safety, without evidence, therapeutic indication, (as against the principles of practice of Medicine); the lacunae of 'there'll be no side effects' has to be bridged to comprehend the change in scenario of disease prevalence, severity which have resulted after global contraception implementation.
- Globally, wantonly implemented Contraception (unaware,) has resulted in 275% increased incidence of global diseases without any geographical variation since physiological germ cells, are smashed to destruction with reduced endogenous estrogen or androgen, resulting in altered cell function, metabolism, increased diseases, metabolic syndrome have become universal.
- Cause, effect relationship is maintained –when acquired contraception-the culprit is reversed, halted, diseases regress >79.9% , therapy is made effective, with germ cells survival and restoration of endogenous hormones, cell function, repair, regeneration of life factors.
- Contraception with resultant aborted blood, contraceptive menstrual blood as environmental pollutant evidenced by rising environmental estrogen has perpetuated the emergence, incidence, virulence of microbes including Hepatitis B virus, Human immune deficiency virus, infectious diseases, global hypoxia, warming, recession.
- Acknowledging that two subsets of population- with, without contraception, have emerged by implementing contraception, and is the hidden altruistic cause for increased morbidity, mortality globally

#### **Acknowledgements**

Mr. Jobin John - an Engineering College student of Karunya University planned the bioinformatics figures to enable retrospective analysis.

His present contact address:

Jobin John, B.Tech (Bioinformatics)

ZIFO Technologies Pvt. Ltd

No. 21A, Anna Salai, Little Mount,

Saidapet, Chennai – 15

**Conflicts Of Interest: None Declared**

#### **References**

- [1]. Alvin C Powers: Diabetes Mellitus; Harrison's Principles of Internal Medicine 18<sup>th</sup> edition, 2012, volume-2, pages-2968-2970, 2973
- [2]. Theodore A Kotchen: Systemic Hypertension; Harrison's Principles of Internal Medicine 18<sup>th</sup> edition, 2012, volume-2, pages-2042, 2043
- [3]. Newby D E; Grubb N R ;Bradbury A :Cardiovascular diseases; Davidson's Principles and practice of Medicine 21<sup>st</sup> edition, 2010, page-606
- [4]. Dark G G, Abdul Razak A R :Oncology; Davidson's Principles and Practice of Medicine, 21<sup>st</sup> edition, 2010, page 258
- [5]. Christopher P .Cannon, Eugene Braun Wald:- Unstable Angina and Non ST elevation Myocardial Infarction; Harrison's Principles of Internal Medicine-17<sup>th</sup> edition :Vol.2, page 1527
- [6]. Bruce C. Gilliland-Systemic Sclerosis-Chromatid breaks, ring chromosomes, acentric fragments page 1429: Harrison's Principles of Internal Medicine-vol.2-11<sup>th</sup> edition
- [7]. Dubuisson JB, C, No's C, et al. Sterilization reversal: fertility results. Hum Reprod. 1995; 10: 1145–1151. [Pub Med]
- [8]. Jean D Wilson: Principles of Endocrinology: page 1701: table-321-3 Growth Hormone Regulation, vol2, 11<sup>th</sup> edition Harrison's Principles of Internal Medicine
- [9]. John Mendelsohn-Principles of neoplasia: Tumor cell biology; page-422:1st vol, 11<sup>th</sup> edition Harrison's Principles of Internal Medicine.
- [10]. Bruce. R. Carr/Jean D Wilson: Disorders of the ovary and female reproductive tract. Cholesterol-essential for estrogen synthesis: page 1820, 1821 vol.2, 11<sup>th</sup> edition; Harrison's Principles of Internal Medicine.
- [11]. Professor Paul Devroey:- Odyssey: Fertile Ground vol.4 Issue 1998 pp4
- [12]. Susan Jobling, Jule E Harries: A survey of estrogenic activity in UK inland waters; Environmental toxicology and chemistry volume 15, issue 11, pages 1993-2002 November 1996