

The Role of Ki-67 In Predicting Prognosis And Overall Survival In Pediatric Gastrointestinal Lymphoma

Dr.S.Selvi¹, Dr. M. Satish Devakumar², Dr.T.Chitra³

¹(Department Of Pathology, Madras Medical College, The Tamilnadu Dr.MGR Medical University, India)

²(Department Of Surgical Gastroenterology, Kilpauk Medical College, Chennai, The Tamilnadu Dr.MGR Medical University, India)

³(Department Of Pathology, Institute Of Child Health, Egmore, The Tamilnadu Dr. MGR Medical University, India)

Abstract:

Background: The variable prognosis of gastrointestinal lymphoma within a pathological stage necessitates the identification of subgroups of patients with a more aggressive disease.

Aims and Objectives: The aim of the present study was to identify the incidence and distribution of paediatric lymphomas, to assess conventional morphological prognostic parameters among the various histopathological subtypes by immunophenotyping and to evaluate the expression of Ki67 in GI lymphoma and correlate with several clinico-pathological features and prognosis.

Materials and methods: Formalin-fixed paraffin-embedded tissue samples from 30 paediatric cases treated by surgical resection for gastrointestinal lymphoma in the year 2008 to 2014 were studied by immunohistochemistry, using monoclonal antibodies to Ki67, CD3, CD20 and CD45.

Results: The results were correlated with clinico-pathological features. Higher Ki-67 labeling index correlated significantly with overall survival rate. The mean Ki-67 labeling index was higher in aggressive lymphoma such as Burkitt, Anaplastic lymphoma and Diffuse large B cell lymphoma. Ki-67 was identified as important prognostic factors.

Conclusion: In this study, 60% Ki 67 cut-off value appear to have a predict value for overall survival and help clinicians to distinguish between GI lymphoma with good and poor outcome. Follow up of these patients for 10 more years could throw more light on the role of Ki-67 LI as long term prognostic indicators.

Keywords: B Cell Type, CD20, CD45, Gastrointestinal lymphoma, Ki-67.

I. Introduction

Lymphomas are neoplasms of the immune system. Lymphomas are of two types, namely, Hodgkin's and Non Hodgkin's lymphoma (NHL). Malignant cells affecting the organs such as Gastrointestinal tract, brain and skin other than lymph node are referred to as extranodal lymphoma. Extranodal lymphomas are usually non Hodgkin's type commonly involving gastrointestinal tract.[1] Gastrointestinal (GI) lymphoma constitutes about 10-15% of all non Hodgkin's lymphoma and about 30-40% of all extranodal lymphoma. Malignant tumors of the gastrointestinal tract especially in pediatric age group are rare and the incidence is less than 1% of all pediatric tumors. [2] Pediatric lymphoma differs from adult lymphoma due to their differences in target cells and exposure to environmental agents. Gastrointestinal tract (GIT) is the most frequently involved by extra nodal Non-Hodgkin's lymphoma in pediatric age group. Topographically the ileocaecal region, appendix, and ascending colon are the most commonly involved[3] whereas in adults stomach is the most common site.[4] The prognosis for childhood gastrointestinal lymphoma improves with realization that almost all cases are disseminated at diagnosis and systemic therapy is needed for long term disease free survival.[5]

Patients with gastrointestinal lymphoma usually presents with abdominal pain, mass, vomiting, diarrhea, constipation, intestinal obstruction/intussusception and nodal involvement. A laboratory investigation includes complete blood count, peripheral smear, bone marrow aspiration study, serum Lactate Dehydrogenase (LDH), uric acid estimation and radiological examination of abdomen and pelvis. Selection of appropriate mass or node for histological material is important. Histology remains the primary means for definitive diagnosis and should be supplemented if possible with immune-phenotype and cytogenetic studies. Lymphoma has to be differentiated from other small round cell tumor showing similar monotonous population of cells such as neuroblastoma, The Ewing family of tumours, rhabdomyosarcoma, desmoplastic small-round-cell tumor. All small round tumors are difficult to diagnose by light microscopy. An accurate diagnosis of these tumors has become increasingly crucial, as desperate approaches to therapy are used for distinct tumour types. Hence IHC and molecular genetics play a major role to overcome the difficulties in diagnosis and treatment of patients.

The aim of this study is to clarify the clinicopathological features of paediatric gastrointestinal B-cell lymphoma in our institution, to correlate with outcome and finally to identify the significant prognostic factors.

II. Materials And Methods

This study of Extra-nodal Gastrointestinal (GI) Lymphoma was conducted in the Institute of Child Health, Egmore, Madras Medical College, Department of Pathology, Chennai during the period between July 2008 and June 2014. All the GI lymphoma cases reported in resected specimens with age group between 1 to 14 years were included for the study. Detailed history of the cases regarding age, sex, history, type of procedure, details of gross characteristics were obtained for all the 30 resected GI Lymphoma cases were recorded in the Paediatric Surgical pathology records. Hematoxylin and Eosin (H&E) stained, 4 microns thick sections of the paraffin tissue blocks of resected specimens were reviewed.

Method Of Data Collection

The clinico-pathological parameters such as age (1-14 years), gender, tumour size (<5 and >5 cm), tumour location (Ileum, Caecum, ascending colon, liver and Spleen), macroscopic appearance were evaluated. Age more than 14 years, non-neoplastic lesions and benign tumors of GIT, lymphoma of mediastinal adenopathy, peripheral adenopathy, testicular and para-pharyngeal mass were excluded from the study. Lymphomas were classified based on St. Jude Staging. Microscopic appearances were divided into B cell and T cell type.

All the cases of GI Lymphoma diagnosed by H&E stained section were subjected to immunohistochemistry for a panel of 4 markers – CD3, CD20, CD45 and Ki-67. The immunohistochemically stained slides were analyzed for the presence of reaction, cellular localization, percentage of cells stained and intensity of reaction. Nuclear staining was assessed for Ki-67. Cytoplasmic staining was assessed for T-cell, B-cell and both T & B-cell for CD3, CD20 and CD45 respectively.

The Ki-67 labeling index (LI) was determined by counting at high power view 1000 tumour cell nuclei in areas of the section. The Ki-67 labeling index for the 30 tumours ranged from 0% to 98% with a mean labeling index of 58.4%. Labeling index greater than 60% indicates High Ki-67. Labeling index lesser than 60% indicates Low Ki-67.

Statistical analysis:

Data was analysed using SPSS version 11.5 which consisted of computing the frequency counts and percentages for qualitative variables and mean for the quantitative variables. Numerical data were expressed as mean with standard deviation. Categorical variables were expressed as frequency and percentage. Survival analysis was calculated using Kaplan-Meier test and presented as cumulative survival rates. Comparison between two survival curves was done using Breslow test. A probability (P-value) less than 0.05 was considered statistically significant.

III. Observation And Results

In the study period of 60 months from July 2008 to June 2014, a total of 6300 specimens were received in the Institute of Child Health, Egmore, Department of Pathology, Madras Medical College for histological examination. Total number of GI resected specimens received was 2834. The total numbers of non-neoplastic, benign and malignant cases were 2784, 12 and 38 respectively. Thus the distribution of non-neoplastic lesions was 98.2%, of benign tumors were 0.42% and of malignant tumors were 1.34% among the GI specimens. Of these, GI Lymphoma was reported in 30 cases.

Pediatric GI Lymphoma had a peak incidence in the age group of 5-9 years. Twenty-one (70%) cases of gastrointestinal lymphoma were reported in males and nine (30%) in females. The clinical features associated with paediatric GI lymphoma were Abdominal pain (76.7%), Abdominal swelling (70%), Vomiting (40%), Obstruction/Intussusception (20%) and Constipation (16.7%). Among the study samples, 15 cases (50%) had tumor less than 5 cm in size and another 15 cases (50%) were 5 cm or more in size.

Topographic distribution:

The most common location of GI Lymphoma was at the Ileum which constituted about 66.7% (n = 20 cases) of the cases. Two (6.7%) cases involved the Large intestine (Caecum) [Figure 1], 6 (20.0%) cases involved both (Ileocaecal region) [Figure 2] and 2 (6.7%) cases were in Spleen [Figure 3].

Histopathological findings :

The distribution of various Histological subtypes in GI Lymphoma in our sample size were grouped into Burkitt's [Figure 4.1] in 10 cases (33.3%), 9 cases (30.0%) were of the Malt type [Figure 5.1], 7 cases (23.3%) were DLBCL type, 1 case (3.3%) was anaplastic type, 1 case (3.3%) was lymphoblastic type and 2 cases (6.7%) belonged to splenic lymphoma. Bone marrow involvement was observed in 5 cases (16.7%) and no bone marrow involvement in the remaining 25 cases (83.3%). Most of the tumors (73.3%) presented in stage III and 8 cases (26.7%) belonged to stage IV.

Study sample of 30 cases with varying type and stage were subjected to immune-histochemical (IHC) analysis with a panel of markers – CD3, CD20, and CD45. The results observed were CD20 positive [Figure 4.2] for 28 cases (93.3%), CD45 positive for 30 cases (100%) and CD3 [Figure 4.3] negative for all 30 cases, which denote B cell type of Lymphoma [Table 2]. Response to Chemotherapy was noted for 25 cases (83.3%) and no response to Chemotherapy noted in 5 cases (16.7%). Among 30 cases, distribution of survival rate was increased to 83.3% and death rate was decreased to about 16.7%, probably due to early detection and treatment of tumor.

Among the 3 patients with recurrence of disease after treatment, only one is alive and is now on second line chemotherapy. There were 5 deaths in our study with 2 death due to disease recurrence, 2 due to chemotherapy complication and 1 due to sepsis.

IV. Survival Analysis

The mean duration of follow-up was 26 months (range of 7 months to 67 months). The Overall and disease free survival rates in our study were 83.3% and 89.2% respectively (FIG 6 & 7). While calculating disease free survival those with progressive disease are non responders were not included. The correlation between the overall survival and various clinicopathological parameters had shown that no bone marrow infiltration ($p < 0.001$), localised disease ($p < 0.001$), early stage disease ($p < 0.001$), non Burkitt type ($p = 0.031$), response to chemotherapy ($p < 0.001$) and low Ki67 labelling index had statistically significantly influenced the overall survival. When the disease free survival was correlated with the same clinicopathological parameters, no bone marrow infiltration ($p < 0.001$), localized disease ($p < 0.001$), early stage ($p 0.006$) and response to chemotherapy ($p < 0.001$) were found to have significant effect on disease free survival as shown in Table 3.

The mean Ki-67 Labeling index (LI) was 58.5% with High Ki-67 LI [Figure 4.4] was seen in 56.7% of cases and low LI [Figure 5.2] in 36.7% of cases. There was increasing percentage of cases with high Ki-67 LI with Extensive involvement, Stage IVE, BM infiltration. No significant association between Overall Survival rates with age, gender, tumour site was observed. There is significant association between Ki-67 with Overall Survival rate as shown in [Table 3].

V. Discussion

Malignant lymphomas are the third most common cancer in the childhood. The distinction between non-Hodgkin's lymphoma of adults and those of children is important because children usually present with diffuse extra-nodal disease when compared with adults, in whom the primary nodal disease is more common [6]. Primary Gastrointestinal [GI] malignancies are the commonest extra-nodal site of involvement in children. Nevertheless, primary GI lymphomas are rare in children and represent less than 5% of all pediatric population with very limited data available in Indian population. [7]

Many biological markers have been examined as potential tools for the evaluation of the biological behavior of gastrointestinal lymphoma in order to predict its clinical outcome. Among these, immunohistochemical staining of proliferation marker Ki-67 has been proposed to be of prognostic value. In the present study, immunohistochemical evaluation was done in 30 cases of gastrointestinal Lymphoma and an attempt was made to correlate the Ki-67 labeling index with the known prognostic factors of GI Lymphoma

The peak age incidence of GI lymphoma has been reported in 5 to 15 years age group in the literature [6,7]. In the present study, mean age of pediatric GI lymphoma was 6.10 years (Standard deviation ± 2.482). In the study done by Morsi et al, [8] the incidence of GI Lymphoma in male and female was 75.7% and 24.3% respectively. In concurrence with the above study, a significant male predominance (76%) of GI Lymphoma was noted with female patients being accounted for 24% of cases.

The most common site of pediatric GI Lymphoma in present study is the small bowel (85%), followed by ileo-caecal region (20%), large intestine (6.7%) and spleen (6.7%). This is almost similar to the most of the reported series in the literature. [8, 9, 10]

Abdominal pain was the most common presentation (76.7%) in the present study followed by abdominal swelling (70%), vomiting (40%), intestinal obstruction (20%) and constipation (16.7%). In contrast to most of other studies, none of our patients presented with generalized lymphadenopathy. Bone marrow aspiration was done in all cases, which revealed bone marrow infiltration in only 5 cases (16.7%). The incidence of bone marrow infiltration was slightly higher in the present study when compared to other studies, which range from 3.5 to 9.1%. [10]

All the patients in the study group underwent complete surgical removal of the diseased segment of bowel or organ. The ideal treatment approach in GI Lymphoma remains controversial. Radical tumor resection followed by chemotherapy in early disease, and limited or no resection followed by poly-chemotherapy in advanced disease may be the justified approach. However recent studies done by Raina et al 2006, have proposed the use of chemotherapy alone as an effective treatment option in primary GI lymphoma in all stages. [11]

The examination of resected specimen in the study group revealed Burkitt lymphoma (33%), MALToma, DLBCL, Anaplastic lymphoma, Lymphoblastic lymphoma and Hodgkins. The incidence of various pathological subtypes in our study was comparable to the study by Morsi et al.

Ranjanbandyopadhyay et al has showed that there was 50% distal small bowel involvement shown in [Table 4] except one case all were males and presented with intestinal obstruction in half of cases. All cases had intestinal growth with 50% shows regional involvement. This is consistent with the current study with male predominance, small bowel involvement with regional lymph node.

With cut-off value of 60%, we found that Ki 67 has statistically significant impact on overall survival in patients with pediatric GI lymphoma. However, high Ki-67 value, which was associated with poorer overall survival in the study, has not shown any significance in predicting disease free survival.

Cell proliferation rate is a vital parameter in grading neoplasm and predicting clinical outcome. In our study, Burkitt lymphoma showed highest Ki 67 positivity ranging between 80 – 98%, followed by lymphoblastic lymphoma (92%), anaplastic lymphoma (80%), DLBCL (40-80%) and MALToma (10-50%). The present study clearly demonstrates that Ki-67 may add both diagnostic and prognostic value in pediatric GI lymphoma.

Ann Arbor classification or its modification by Musshoff was applied by most author to describe the extent of disease. In our study we applied St. Jude staging system to describe the extent of disease. Most of our patients belonged to stage II disease with disease free survival of 88% when compared to advanced (stage IV E) disease with disease free survival of 37.5%. In a similar study by Patte C et al, 2001, showed that patients with Stage II has disease free survival of about 98 to 100% versus 76% in those with most extensive disease. Most other publications have stated an survival rate ranging from 24 to 87% for intestinal lymphoma, which was 83.3% in our series and 80.6 % in other prospective study by Ahmed et al. In view of diverging definitions, various staging classification, small cohort of patients and different histological definition in most publication, it is difficult to have a more detailed analysis concerning stage and histological subtypes.

The survival analysis in the present study (figure 6 & 7) has shown that bone marrow infiltration, extensive disease, Burkitt's type, advanced stage of disease, non responders to chemotherapy and high Ki 67 values were significantly associated with poorer overall survival. This fact matches with other studies showing that the outcome depends more on the tumor burden at diagnosis [12] and can be predicted by high Ki 67 value, Serum LDH, interleukin-2, B-2 microglobulin levels. [10]

Bone marrow infiltration, extensive disease, Burkitt's type, advanced stage of disease and non-responders to chemotherapy were in addition found to significantly influence the disease free survival. This is consistent with earlier reports, [13,14] demonstrating that disease free survival is influenced by the extent of disease at the initiation of therapy.

Raina V et al in the study sample of 77 new cases of primary gastrointestinal lymphoma over the period of 15 years have found that gastrointestinal tract is the most common extranodal site and the treatment modality in his studies demonstrates that chemotherapy alone has emerged as an effective option despite surgical resection and conclude organ preservation strategy using chemotherapy alone which can be successfully employed in a significant number of patients with primary Non Hodgkins Lymphoma.

Assigning patients to appropriate therapy depending upon their risk stratification has become the rule with different protocols. A patient with localised disease requires less intensive therapy than those with extensive disease. It is therefore necessary that patient should not be over-treated. Pediatric GI lymphoma patients in whom complete resection has been done require only few course of chemotherapy without compromising final outcome. On the contrary, patients with high risk groups (those with advanced or extensive disease) required intensive therapy with multiple drugs to achieve similar outcome in the present study.

To conclude, we noticed a higher prevalence of Burkitt's among primary paediatric GI Lymphomas and prognosis can be interpreted by using Ki 67 proliferative index. Hence, Ki-67 labelling index could be helpful for clinicians to recognise patients with high risk for recurrence and poor survival in combination with other prognostic factors like bone marrow infiltration, histological type, stage and response to chemotherapy.

VI. Conclusion

The incidence of paediatric GI lymphoma was lower (0.48%) in the present study when compared to western population (1.2%). The mean age of presentation was 6.1 year with male predominance. Different types of lymphoma are associated with significantly different Ki-67 values. In this study, a 60% Ki 67 cut-off value appear to have a predict value for overall survival and can help thus clinicians to distinguish between GI lymphoma with good and poor outcome. Stage is the most significant prognostic factor and localised disease is associated with better survival. In conclusion the role of Ki-67 in growth and aggressiveness of GI lymphoma is complex and poorly understood. Ki-67 labelling index could be helpful for clinicians to recognise patients with high risk for recurrence and poor survival in combination with other prognostic factors like bone marrow infiltration, histological type, stage and response to chemotherapy.

However, a large sample size and follow-up of this subset of patients for 10 or more years could help to identify the role of Ki-67 and other factors as long-term prognostic indicators in patients with GI lymphoma.

References

- [1]. Aisenberg AC. Coherent view of Non- Hodgkin’s lymphoma. J Clin Oncology.1995, 13:2656-75.
- [2]. Kliegman R. Epidemiology of Childhood and Adolescent Cancer. In: Nelson Textbook of Pediatrics. 18th ed. Philadelphia, PA: WB Saunders; 2007:491
- [3]. Primary Gastrointestinal Malignancies in Childhood and Adolescence - an Asian Perspective Amna Khurshed, Rashida Ahmed, Yasmin Bhurgri. Asian Pacific journal of cancer prevention: 8(4):613-7.
- [4]. Radman I, Jasminka K, Ayer I. Surgical resection in the treatment of primary gastrointestinal NHL, Retrospective Study. Croat Med J. 2002, 43:555- 560.
- [5]. LaQuaglia M, Stolar C, Krailo M. The role of surgery in abdominal NHL: Experience from the Children Cancer Study Group. Journal of Pediatric Surgery.1992, Vol 27, No 2: 230-235.
- [6]. Murphy SB. Classification, staging, and end results of treatment of childhood Non Hodgkin’s lymphomas: Dissimilarities from lymphoma in adults. Semin oncol 1980;7:332-9.
- [7]. Kurshed A, Ahmed R, Bhurgri Y. Primary GI malignancies in childhood and adolescence: An asian perspective. Asian Pac J Cancer Prev 2007;8:613-7.
- [8]. Parkin DM, Karmarova E, Draper GI, editors. Inter-national incidence of childhood cancer. Vol. II. IARC Scientific Publications. 1998, No. 144, IARC Mongr Eval Carcinog Man.
- [9]. Ranjan Bandyopadhyay, sinha SK, chatterjee U, Nag D, Mukhopadhyay S, Chowdhury, SR et al. Primary pediatric GI lymphoma, Indian Journal pediatr onco 2011;32:92.5
- [10]. Morsi A, Abd El-Ghani Ael-G, El- Shafiey m, Ismail H, Monir M. Clinicopathological features and outcome of management of pediatric GI lymphoma. J Egypt Natl canc Inst 2005;17:251-9.
- [11]. Raina V, Sharma A, Vora A, Shukla NK, Deo SV, Dawar R. Primary GI lymphoma chemotherapy alone an effective treatment modality: Experience from a single center in india. Indian J Cancer 2006;43:30-5.
- [12]. Ioachim HL: IOACHIM’s Lymph Node Pathology. Philadelphia: Lippincott Williams & Wilkins; 2009.
- [13]. Bethel CA, Bhattacharyya N, Hutchinson C. Alimentary tract malignancies in children. J Pediatr Surg.1997, 32 (7): 1004-1009.
- [14]. Shad A. Complications in the management of non-Hodgkin’s lymphoma. In: Magath IT, (ed). The non-Hodgkin’s lymphoma, (2nd ed.). London: Edward Arnold. 1997, 597-629.

Figures

Figures



Fig 1 Cut surface – Grey white nodular mass in caecum

Fig 2 Cut surface in ileocaecum shows grey white mass involving upto serosa.



FIG 3 External surface of Spleen - nodular

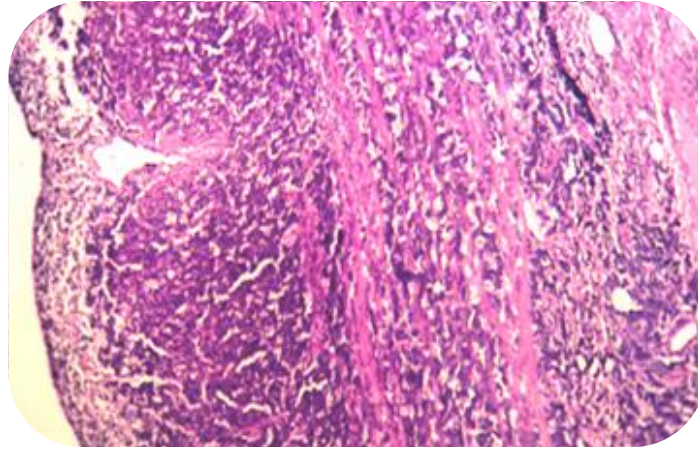


FIG 4.1 H&E X10 Burkitt Lymphoma involving upto serosa

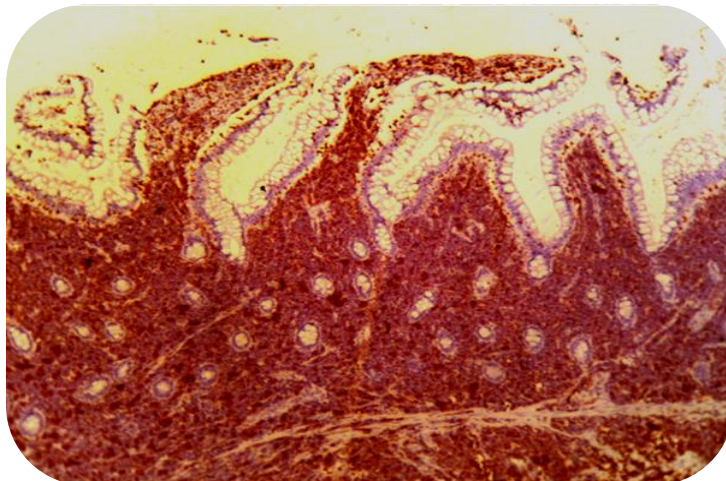


FIG 4.2: IHC X10 Burkitt Lymphoma CD 20 shows intense strong positivity.

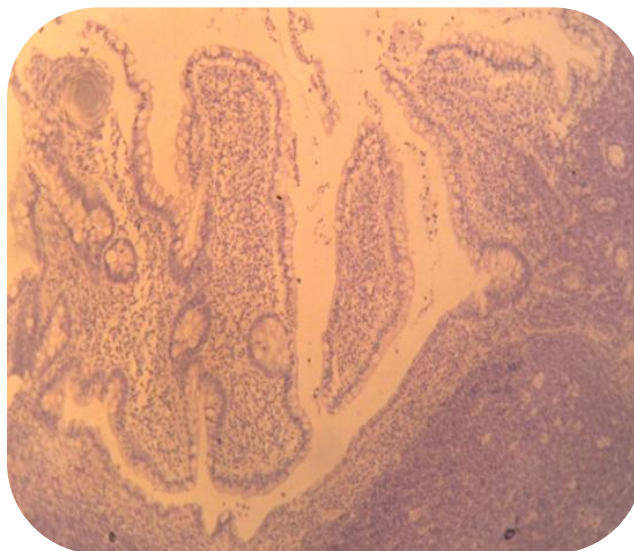


FIG 4.3: IHC X10 Burkitt Lymphoma CD3 shows negativity

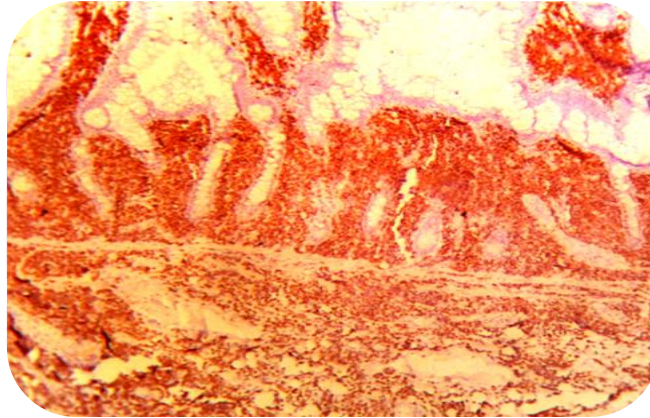


FIG 4.4 IHC X10 Ki67 Burkitt Lymphoma -
tumour cells show high labeling index

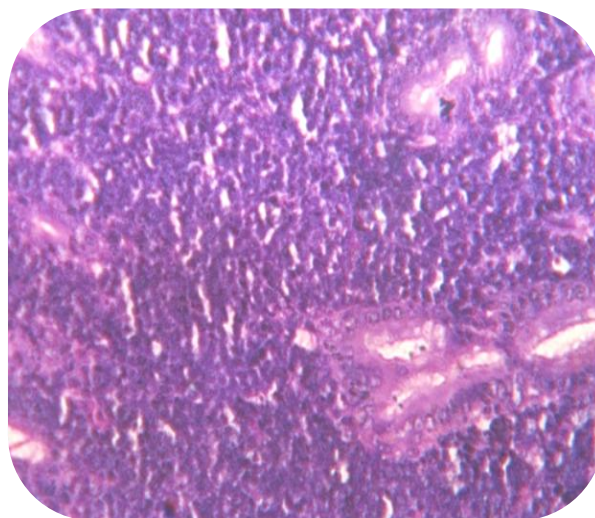


FIG 5.1 H&E X40 Maltoma tumour cell
showing lymphoepithelial invasion

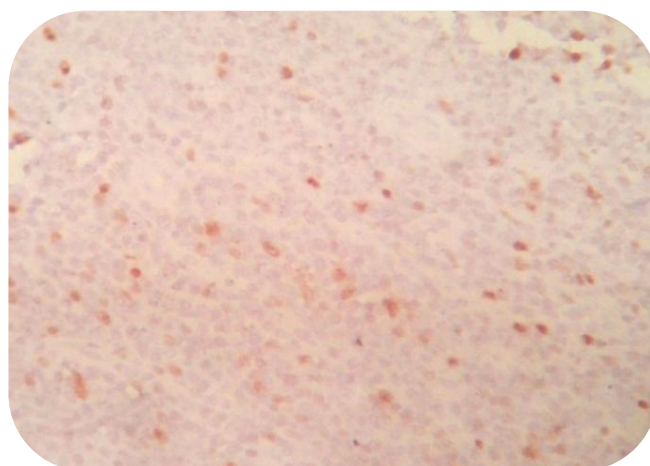


FIG 5.2: IHC X40 Maltoma -Ki67 low labeling
index positive

Fig -6: Overall- Survival function

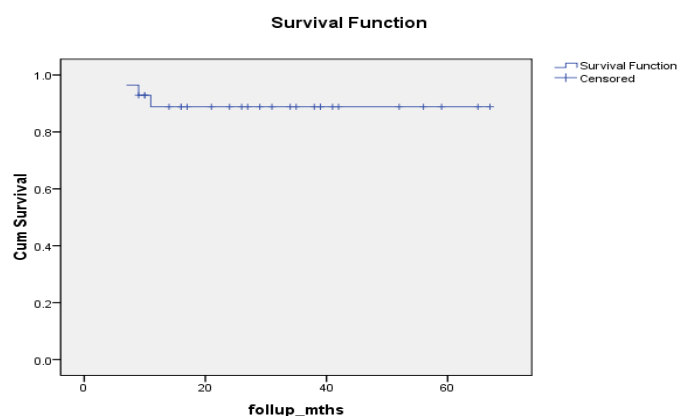
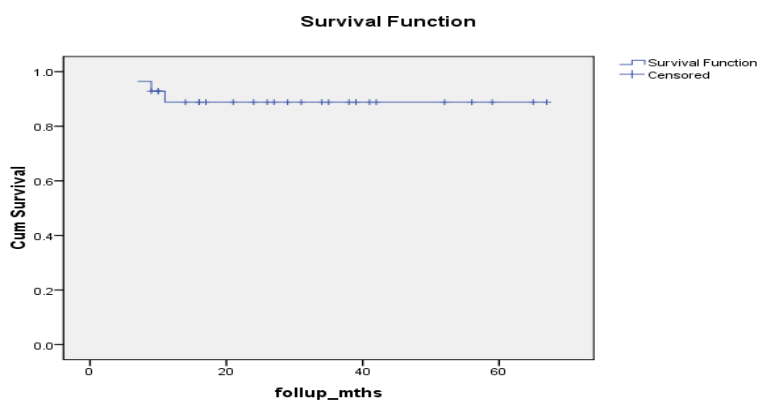


Fig 7: Survival function children excluding chemotherapy complications



Tables

Table 1: Showing distribution of gastro intestinal lymphoma among the various clinicopathological groups for the ihc study (30 cases)

Clinicopathological factors	No. of cases
Age	<5yrs 15(50.0%) >5yrs 15(50.0%)
Gender	Male 21(70.0%) Female 9(30.0%)
Tumor site	Small intestine 20(66.7%) Large intestine 2(6.7%) Both 6(20.0%) Spleen 2(6.7%)
Tumor extent	Localised 25(83.3%) Extensive 5(16.7%)
BM infiltration	Yes 5(16.7%) No 25(83.3%)
Histological type	Burkitt 10(33.3%) Others :Maltoma 9(30.0%) DLBCL 7(23.3%) Anaplastic type 1(3.3%) Lymphoblastic type 1(3.3%) Hodgkins lymphoma 2(6.7%)
Stage	IIE 25(83.3%) IVE 5(16.7%)
Surgical resection	Complete resection 30(100.0%) Partial resection 0(0.0%)
Preconditioning CT	Yes 0(0.0%) No 30(100.0%)
Response to CT	Yes 25(83.3%) No 5(16.7%)
CT complication	Yes 2(6.7%) No 28(93.3%)

Table 2: Results of IHC observed for 30 cases

IHC	Positive(%)	Negative(%)
CD20	28(93.3)	2(6.7)
CD45	30(100)	0(0.0)
CD3	0(0.0)	30(100)
Ki67 <60	21(70.0)	2(6.7)
>60	17(56.7)	

Table 3: Overall and disease free survival analysis

Variables	Total	60months Overall survival rate	P value	Result	Total	60months Overall survival rate	P value	Result
All patients	30	83.3	28		28	89.2		
Age <5years	15	86.7	1.000	NS	15	86.7	1.000	NS
>5years	15	80.0			13	92.3		
Gender- Male	21	76.2	0.286	NS	19	84.2	0.530	NS
Female	9	100.0			9	100.0		
NO BMI	25	100.0	<0.001	Sig	25	100.0	<0.001	Sig
BMI	9	0.0			3	0.0		
GIT SI	20	85.0	0.564	NS	19	89.5	0.900	NS
LI	2	50.0			1	100.0		
Both	6	83.3			6	83.3		
Spleen	2	100.0			2	100.0		
Disease Local	25	100.0	<0.001	Sig	25	100.0	<0.001	Sig
Extent	5	0.0			3	0.0		
Histotype: Burkitt	10	60.0	0.031	Sig	9	66.7	0.026	Sig
Others	20	95.0			19	100.0		
Stage IIE	22	100.0	<0.001	Sig	22	100.0	0.006	Sig
IVE	8	37.5			6	50.0		
Response to CT			<0.001	Sig	25	100.0	<0.001	Sig
YES	25	100.0			3	0.0		
NO	5	0.0						
CT complication			0.023	Sig	-	-	-	-
YES	2	0.0						
NO	28	89.3						
Ki67 Low value	13	100.0	0.04	Sig	13	100.0	0.226	NS
High value	17	70.6			13	80.0		

Table 4: Comparison of clinicopathological factors with various study group.

Study group	AGE	SITE	Histo type
RanjanBandyopadhyay et al 2011	1 – 8 yrs (6 cases)	Small bowel (50%)	Burkitt (66%)
Morsi et al 2005	1-15 yrs (43 cases)	Small bowel (35%)	Burkitt (56%)
Khurshed et al 2007	1-19 yrs (60 cases)	Colon (85%)	Burkitt (47%)
Bethel CA et al 1997	1-17 yrs (55 cases)	Small intestine (22%)	Burkitt (38%)
Current study	1-12 yrs (30 cases)	Small intestine (66%)	Burkitt (33%)